

# EAGLE-EYE




**Connessione a dispositivo : PLC OMRON SISMAC CP1E**

**Per la connessione seriale RS232 ( o rs485) occorre utilizzare l'accessorio aggiuntivo serial device server EKI-1521**

Sw di connessione Advantech EKI CONFIGURATION UTILITY

INDIRIZZO IP DEL SERIAL DEVICE SERVER EKI-1521 192.168.37.70

SERVER ONLINE	GATEWAY		STATUS	MESSAGE
<a href="#">Disconnect</a>	<b>ERREUNO LABORATORIO</b> (70-b3-d5-bb-f0-3e) <a href="#">note</a>	<a href="#">192.168.37.240</a>	Plant: ERREUNO LABORATORIO S/N:LINEA COMESER	
CONNECTED DEVICES LIST:				
		<a href="#">192.168.37.69</a>	Hilscher GmbH	
		<a href="#">192.168.37.181</a>	Advantech CO.	
		<a href="#">192.168.37.68</a>	Rockwell Automation	
		<a href="#">192.168.37.70</a>	Advantech CO.	

TEST DI COLLEGAMENTO

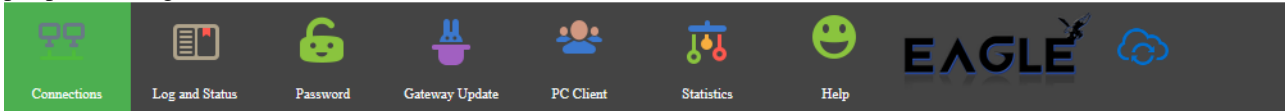
```
C:\Users\roberto3>PING 192.168.37.70

Esecuzione di Ping 192.168.37.70 con 32 byte di dati:
Risposta da 192.168.37.70: byte=32 durata=430ms TTL=63
Risposta da 192.168.37.70: byte=32 durata=216ms TTL=63
Risposta da 192.168.37.70: byte=32 durata=519ms TTL=63
Risposta da 192.168.37.70: byte=32 durata=168ms TTL=63


Statistiche Ping per 192.168.37.70:
  Pacchetti: Trasmessi = 4, Ricevuti = 4,
  Persi = 0 (0% persi),
  Tempo approssimativo percorsi andata/ritorno in millisecondi:
  Minimo = 168ms, Massimo = 519ms, Medio = 333ms
```



DIRETTAMENTE DAL SERVER EAGLEYE , è possibile configurare il device avendo al suo interno un web server , per poter configurare direttamente il serial device server



SERVER ONLINE	GATEWAY		STATUS	MESSAGE
<a href="#">Disconnect</a>	<b>ERREUNO LABORATORIO</b> (70-b3-d5-bb-f0-3e) <a href="#">note</a>	<a href="#">192.168.37.240</a>	Plant: ERREUNO LABORATORIO S/N:LINEA COMESER	<a href="#">(device up)</a>
CONNECTED DEVICES LIST:				
		<a href="#">192.168.37.69</a>	Hilscher GmbH	
		<a href="#">192.168.37.181</a>	Advantech CO.	
		<a href="#">192.168.37.68</a>	Rockwell Automation	
		<a href="#">192.168.37.70</a>	Advantech CO.	
<a href="#">Connect</a>	<b>ENSYS TEST</b> (70-b3-d5-bb-f0-02) <a href="#">note</a>	<a href="#">192.168.30.193</a>		

 **click con mouse**



- Home
- System
- Net Configuration
  - Net 1
  - Net 2
- Port Configuration
  - Port 1
- Monitor
  - Port 1
- Alarm
  - Setting
  - Event
- Change Password
- Export
- Import
- Reboot

## Welcome to EKI-1521 Web Configuration Server

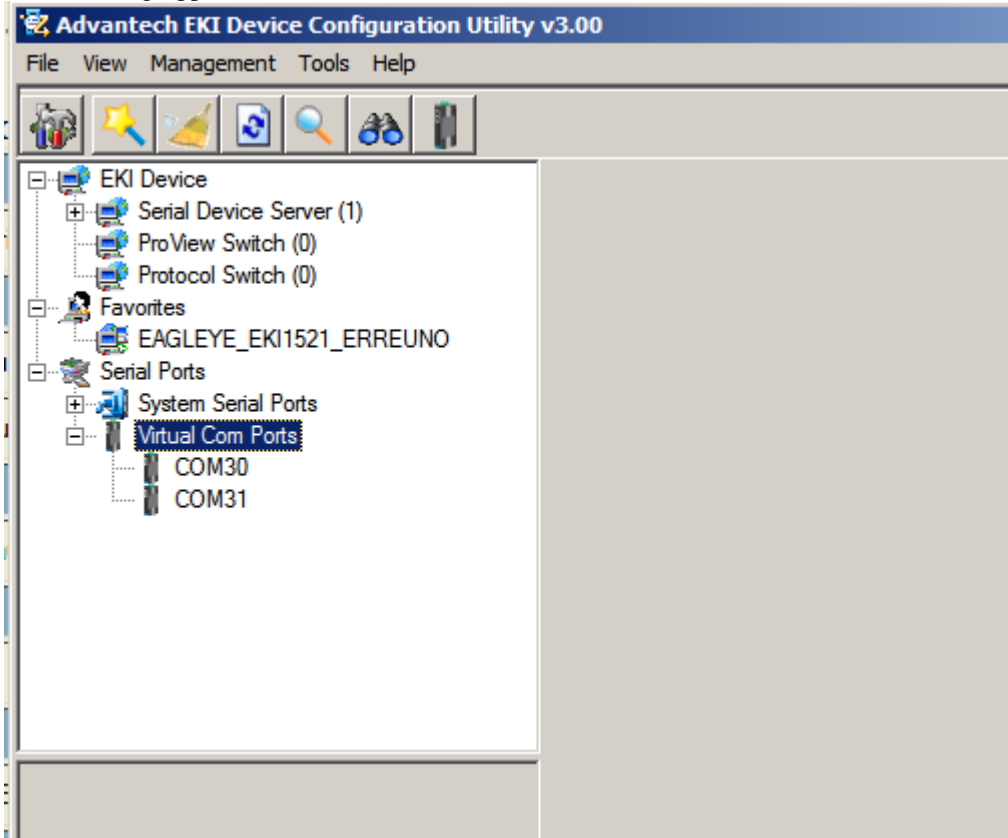
We provide following function to configure EKI-1521

<b>System</b>
— device name, device description, firmware message
<b>Port Configuration</b>
— UART Configuration : baud rate, parity bit, data bits, stop bits, serial type, flow control
— Mode Configuration : virtual COM port mode, control mode(TCP/UDP), data mode(TCP/UDP)
<b>Network Configuration</b>
— IP address, netmask, default gateway and MAC address
<b>Monitor</b>
— monitor port data
<b>Alarm</b>
— mail setting, trap setting, SNMP agent setting, event setting
<b>Change Password</b>
— change the login password
<b>Export</b>
— export configuration file
<b>Import</b>
— import configuration file
<b>Reboot</b>
— after configuring, you must restart the device and the setting will take affect

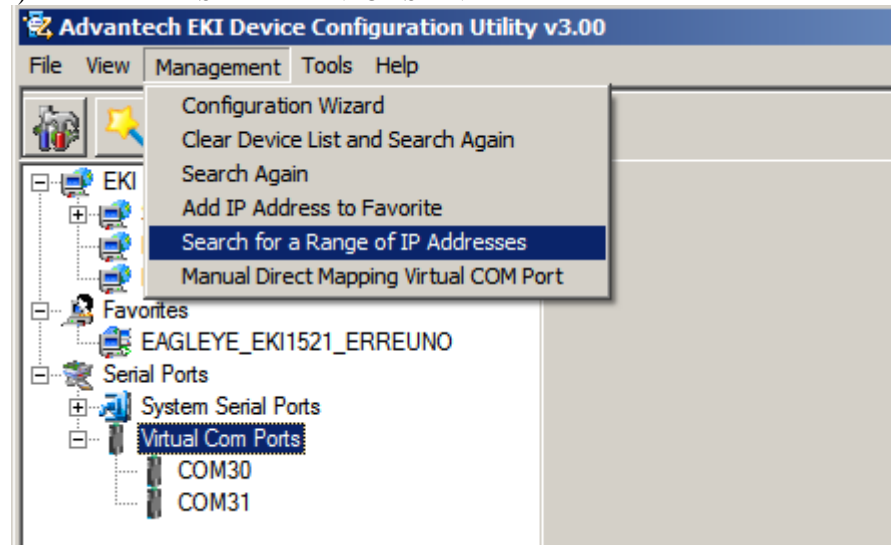
If you need additionnal information : [info@advantech.com.tw](mailto:info@advantech.com.tw)  
 If you wish to be contacted : [sales@advantech.com.tw](mailto:sales@advantech.com.tw)

Per Mappare la com virtuale sul computer invece occorre :

1) creare un gruppo : lo chiamo EAGLE\_EKI1521\_ERREUNO



2) MAPPARE IL SERIAL DEVICE SERVER



The screenshot shows a network configuration software interface. On the left, a tree view displays the following structure:

- EKI Device
  - Serial Device Server (1)
    - ProView Switch (0)
    - Protocol Switch (0)
  - Favorites
    - EAGLEYE\_EKI1521\_ERREUNO**
  - Serial Ports
    - System Serial Ports
    - Virtual Com Ports
      - COM30
      - COM31

A dialog box titled "Please input a valid IP range" is overlaid on the right side of the interface. It contains two input fields:

Start IP Address	End IP Address
192.168.37.70	192.168.37.70

Below the input fields are "OK" and "Cancel" buttons.

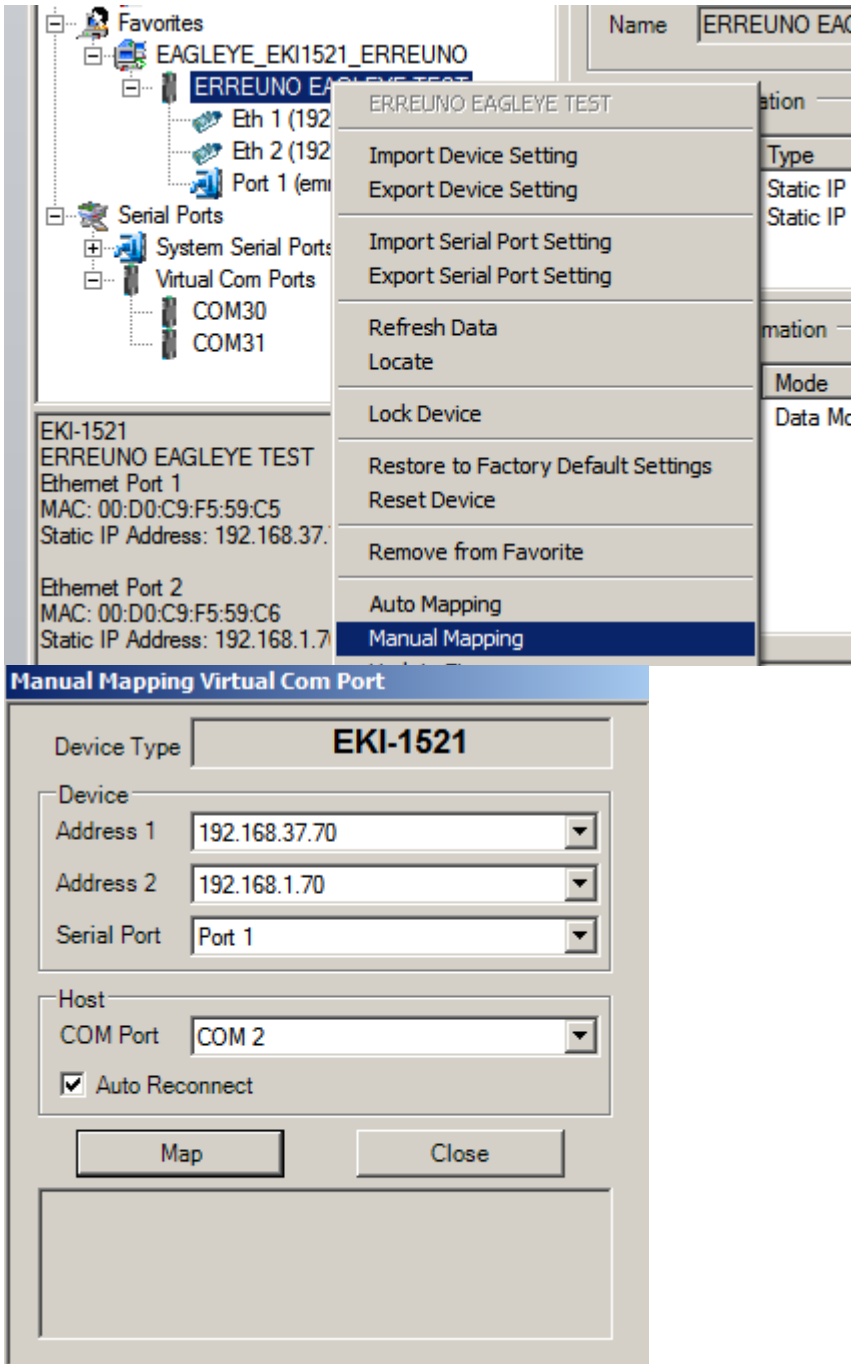
Below the dialog box, a toolbar with various icons is visible. The tree view is expanded to show the following structure:

- EKI Device
  - Serial Device Server (1)
    - EKI-1522
      - ERREUNO-FOTOVOLTAICO
    - ProView Switch (0)
    - Protocol Switch (0)
    - Favorites
      - EAGLEYE\_EKI1521\_ERREUNO
        - ERREUNO EAGLEYE TEST
          - Eth 1 (192.168.37.70)
          - Eth 2 (192.168.1.70)
          - Port 1 (emmedi\_1)
    - Serial Ports
      - System Serial Ports
      - Virtual Com Ports
        - COM30
        - COM31

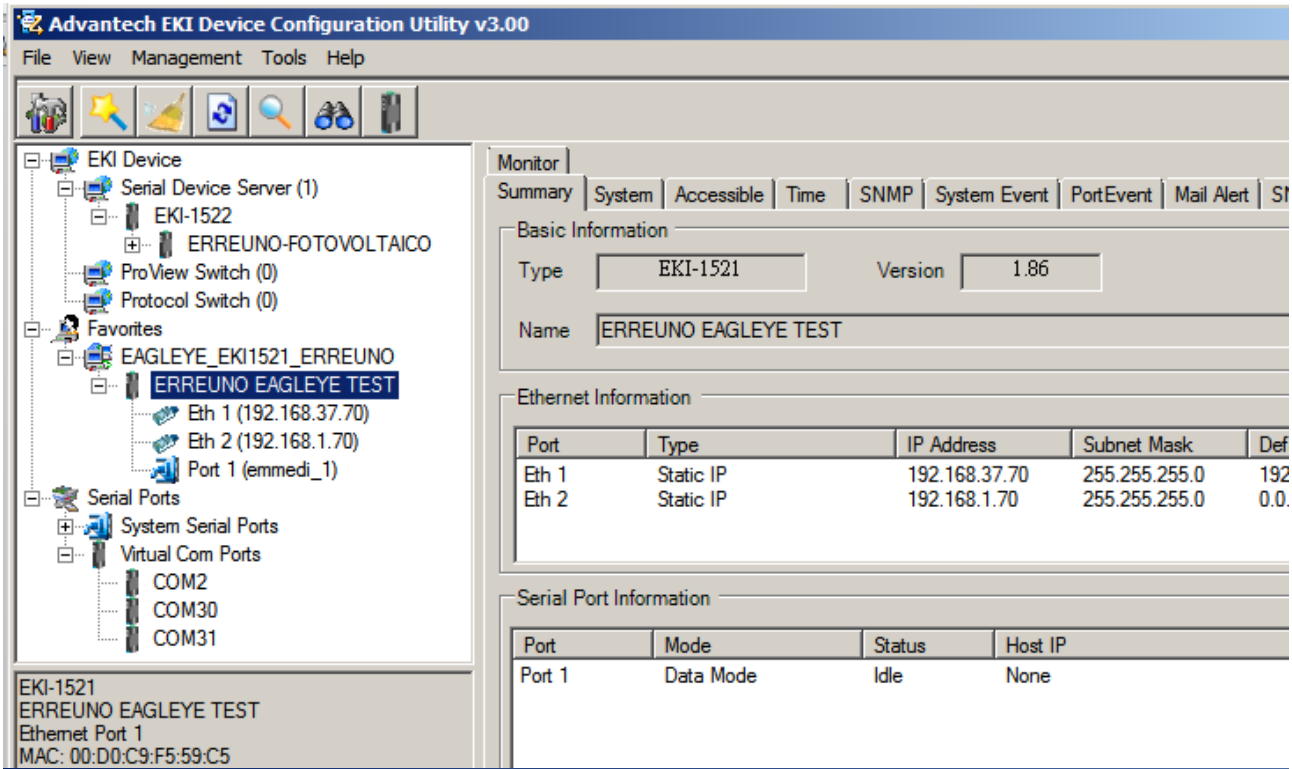
At the bottom left, a status bar displays the following information:

```
Serial Port 1
emmedi_1
19200 bps, O81
No flow control
```

3) ORA POSSO AGIUNGERE LA VIRTUAL COM



Ho mappato la com virtuale , ora posso fare il test di buon funzionamento :  
nota -> la com deve essere settata in rs232 e avere il connettore loop test inserito :  
serial device serve settato in virtual com



**Advantech EKI Device Configuration Utility v3.00**

File View Management Tools Help

**EKI Device**

- Serial Device Server (1)
  - EKI-1522
    - ERREUNO-FOTOVOLTAICO
  - ProView Switch (0)
  - Protocol Switch (0)
- Favorites
  - EAGLEYE\_EKI1521\_ERREUNO
    - ERREUNO EAGLEYE TEST**
      - Eth 1 (192.168.37.70)
      - Eth 2 (192.168.1.70)
      - Port 1 (emmedi\_1)
  - Serial Ports
    - System Serial Ports
    - Virtual Com Ports
      - COM2
      - COM30
      - COM31

EKI-1521  
 ERREUNO EAGLEYE TEST  
 Ethernet Port 1  
 MAC: 00:D0:C9:F5:59:C5

**Monitor**

Summary | System | Accessible | Time | SNMP | System Event | PortEvent | Mail Alert | ST

**Basic Information**

Type: EKI-1521      Version: 1.86

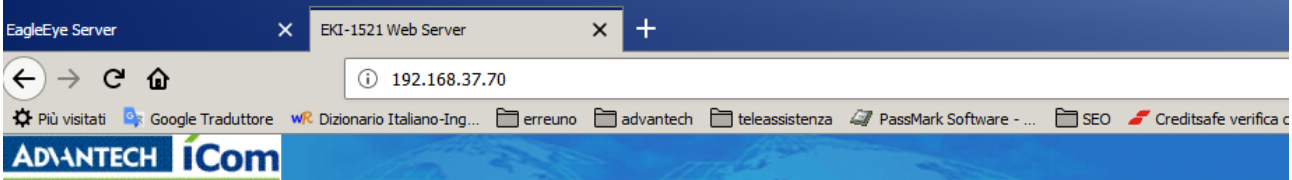
Name: ERREUNO EAGLEYE TEST

**Ethernet Information**

Port	Type	IP Address	Subnet Mask	Def
Eth 1	Static IP	192.168.37.70	255.255.255.0	192
Eth 2	Static IP	192.168.1.70	255.255.255.0	0.0

**Serial Port Information**

Port	Mode	Status	Host IP
Port 1	Data Mode	Idle	None

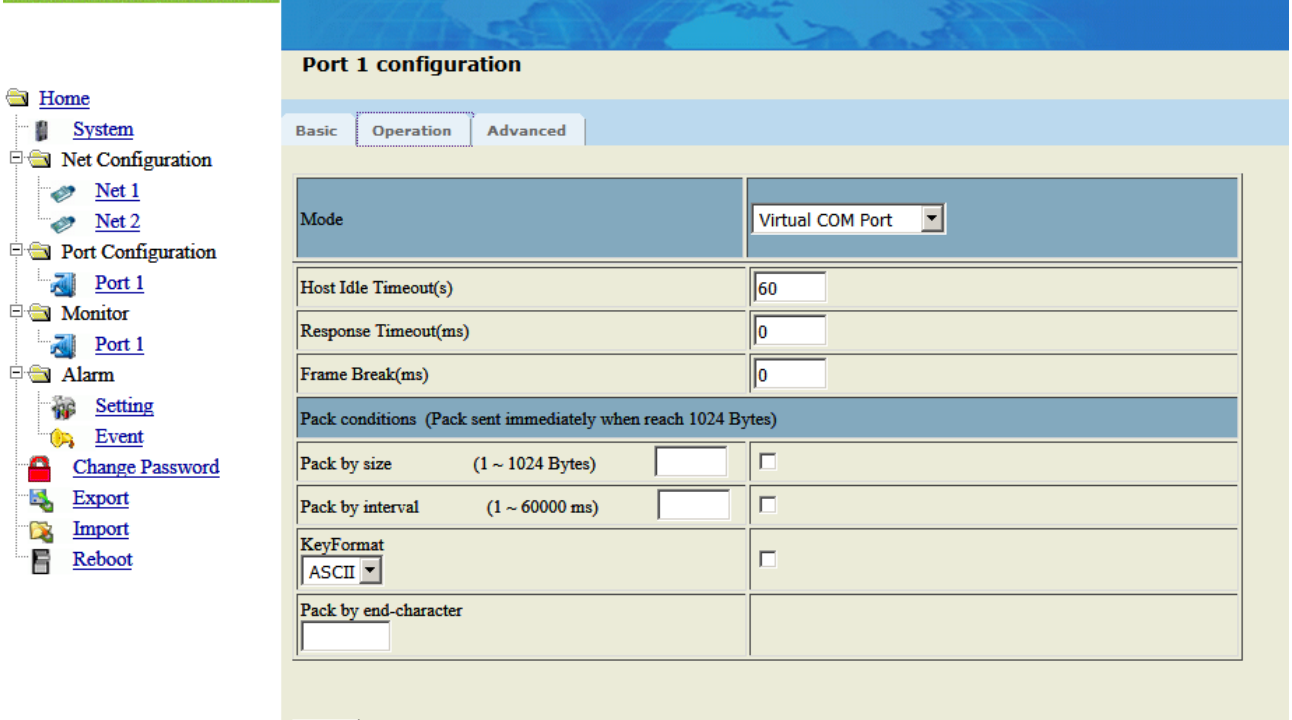


EagleEye Server      EKI-1521 Web Server

192.168.37.70

Più visitati   Google Traduttore   WR Dizionario Italiano-Ing...   erreuno   advantech   teleassistenza   PassMark Software - ...   SEO   Creditsafe verifica c

**ADVANTECH ICom**



**Port 1 configuration**

Basic | **Operation** | Advanced

Mode: Virtual COM Port

Host Idle Timeout(s): 60

Response Timeout(ms): 0

Frame Break(ms): 0

**Pack conditions (Pack sent immediately when reach 1024 Bytes)**

Pack by size (1 ~ 1024 Bytes)     

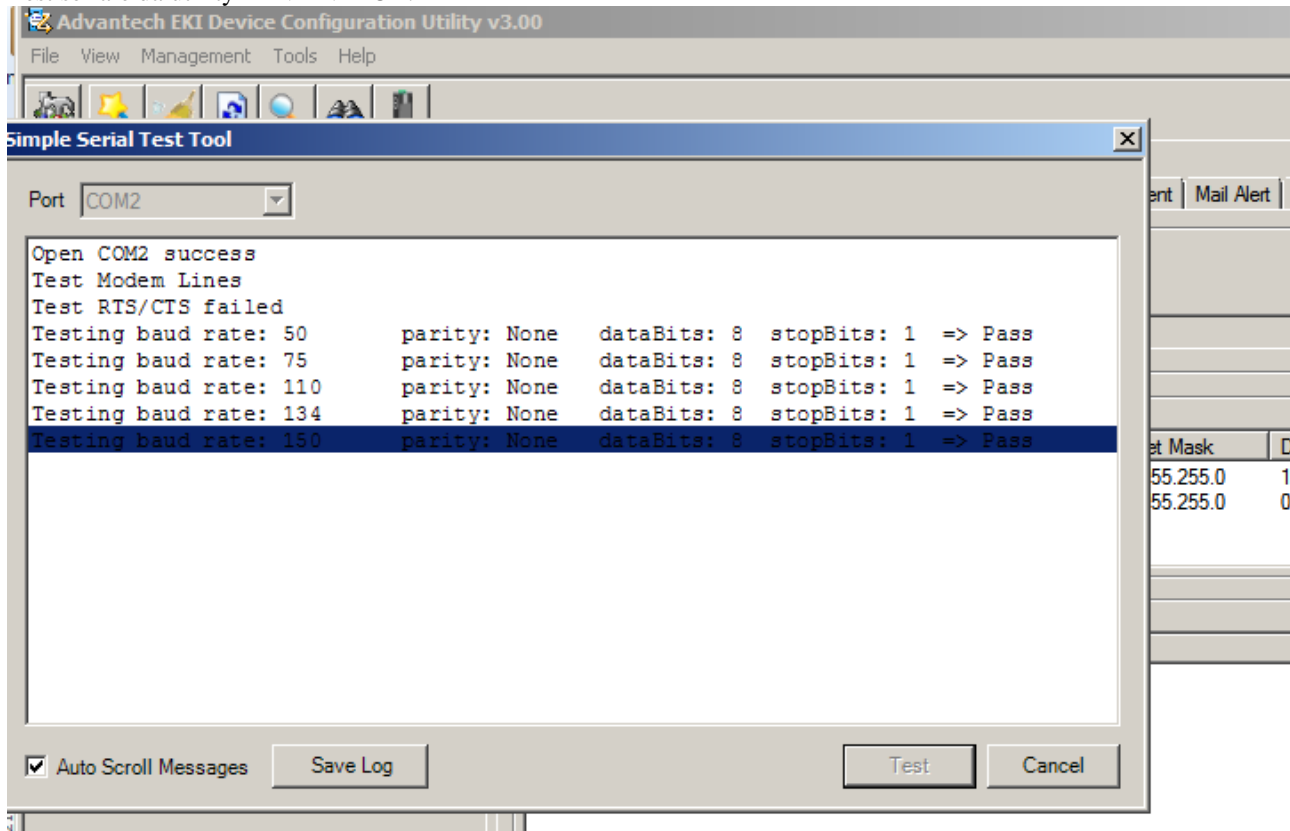
Pack by interval (1 ~ 60000 ms)     

KeyFormat: ASCII

Pack by end-character:

- Home
- System
- Net Configuration
  - Net 1
  - Net 2
- Port Configuration
  - Port 1
- Monitor
  - Port 1
- Alarm
  - Setting
  - Event
  - Change Password
  - Export
  - Import
  - Reboot

Test seriale da utility ADVANTECH:



A questo punto sul PC locale posso lanciare il sw di programmazione OMRON e tramite la COM virtuale mappata in precedenza collegarmi al PLC .