



Connessione a dispositivo :

PLC ROCKWELL ALLEN BRADLEY MODELLO MICRO 820 2080-LC20-20QBB

Sw di connessione RSLinx Classic Lite RSwho - 1

INDIRIZZO IP DEL PLC 192.168.37.68

Disconnect	ERREUNO PLANT 2 (70-b3-d5-bb-f0-34) note	192.168.37.244	Plant: ERREUNO PLANT 2 S/N:LABORATORIO	 (device up)
CONNECTED DEVICES LIST:				
		192.168.37.70	ADVANTECH CO., LTD.	
		192.168.37.68	Rockwell Automation	
		192.168.37.181	Advantech CO.	
		192.168.37.71	Cermate Technologies	
		192.168.37.69	Hilscher GmbH	

TEST DI COLLEGAMENTO

```

c:\ Amministratore: C:\windows\system32\CMD.exe
Microsoft Windows [Versione 6.1.7601]
Copyright (c) 2009 Microsoft Corporation. Tutti i diritti riservati

C:\Users\roberto3>PING 192.168.37.68

Esecuzione di Ping 192.168.37.68 con 32 byte di dati:
Risposta da 192.168.37.68: byte=32 durata=268ms TTL=127
Risposta da 192.168.37.68: byte=32 durata=194ms TTL=127
Risposta da 192.168.37.68: byte=32 durata=109ms TTL=127
Risposta da 192.168.37.68: byte=32 durata=140ms TTL=127

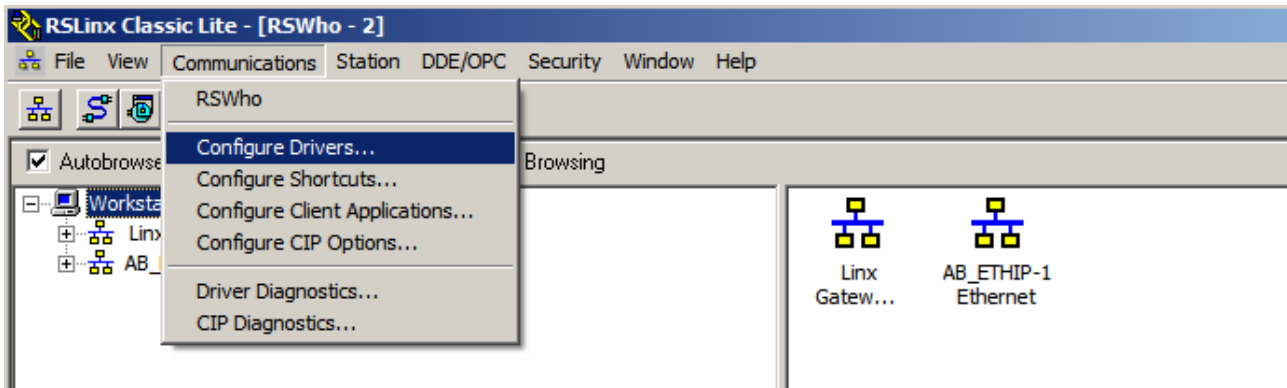
Statistiche Ping per 192.168.37.68:
    Pacchetti: Trasmessi = 4, Ricevuti = 4,
    Persi = 0 (0% persi),
Tempo approssimativo percorsi andata/ritorno in millisecondi:
    Minimo = 109ms, Massimo = 268ms, Medio = 177ms

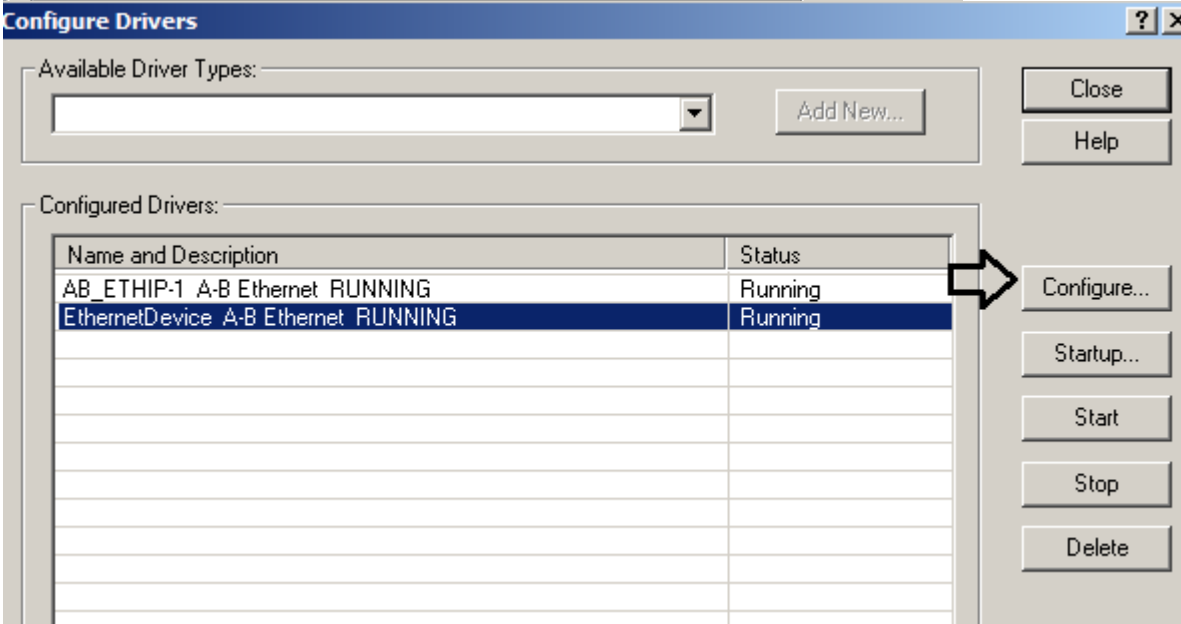
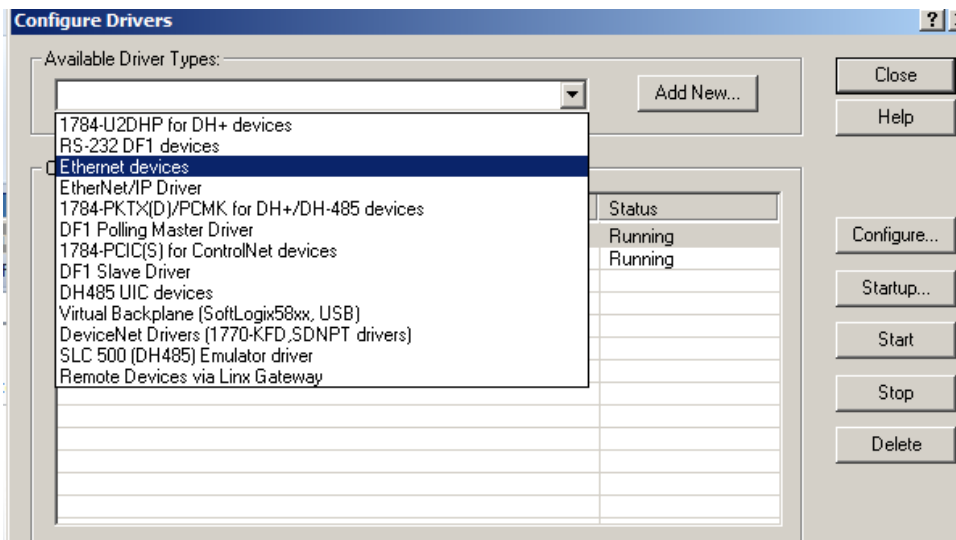
C:\Users\roberto3>

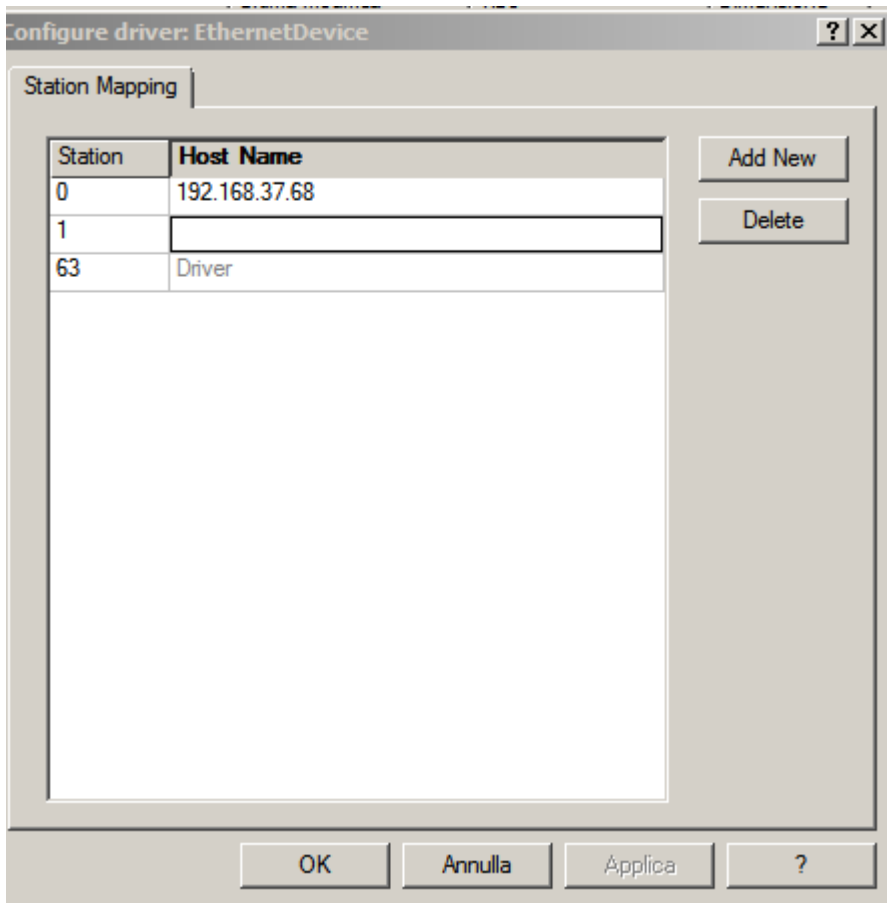
```



- 1-APRIRE RSLINX
- 2-aprire configure driver
- 3-aggiungere driver Ethernet Device
- 4-configurare ethernet device con indirizzo IP del plc 192.168.37.68







A questo punto vedo il plc :

